

# Fall Program

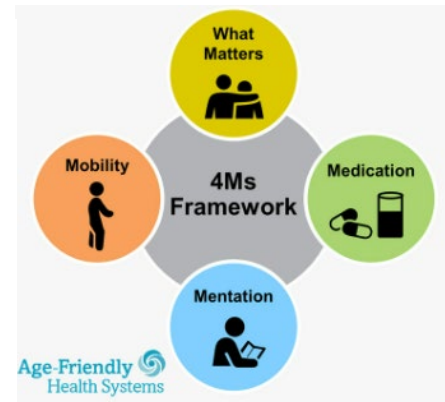
## The State of Age Friendly Health Systems in Pennsylvania

Featuring:

**Panelists across Pennsylvania that have obtained Age Friendly Health System recognition and/or certification**

Age-Friendly Care PA GWEP, Penn State Nese College of Nursing  
Allegheny Health Network  
UPMC Mercy  
UPMC St. Margaret's  
Veterans Affairs Pittsburgh Healthcare System  
The Willows, Presbyterian SeniorCare Network

*\*Panelists subject to change.*



This year's Fall Program is designed to educate attendees on Age Friendly Health Systems and the 4M's of geriatrics as well as give an opportunity to learn about multiple health systems across Pennsylvania and their experience in gaining Age Friendly Health System recognition and certification.

## Virtual Zoom Meeting

In Collaboration with the  
Jewish Healthcare Foundation

Complimentary Registration for Members  
(RSVP is required)

Guests are Welcome  
Guest fee (all healthcare professionals) - \$25

**Registration begins October 1<sup>st</sup>**  
**Visit [www.pagswd.org](http://www.pagswd.org)**

A confirmation will be sent to the email address you  
provide, upon successful registration.

This program is sponsored by  
The Pennsylvania Geriatrics Society – Western Division and  
University of Pittsburgh School of Medicine Center for Continuing  
Education in the Health Sciences

**Questions:** Contact Eileen Taylor at 412.321.5030 x105 or email to  
[etaylor@acms.org](mailto:etaylor@acms.org)

## AGENDA

- 6:00 pm Welcome – *Christine Herb, MD – President*
- 6:05 pm Fall Business Meeting – Pennsylvania Geriatrics Society – Western Division, *Christine Herb, MD, President*
- 6:20 pm Presentation on the 4Ms (What Matters, Medication, Mentation, Mobility) – *Lyn Weinberg, MD*
- 6:35 pm Panel Presentation
- 7:00 pm Panel Q&A
- 7:30 pm Conclusion

*\*Agenda subject to change*

# Pennsylvania Geriatrics Society – Western Division

## *The State of Age Friendly Health Systems in Pennsylvania*

**November 10, 2022**

### **Goals & Objectives**

---

**At the completion of this program, attendees will be able to:**

1. Describe the goals of an Age Friendly Health System
2. Recognize strategies to become recognized and certified as an Age Friendly Health System
3. Identify the current state of Age Friendly Health Systems in Pennsylvania

### **CONTINUING EDUCATION INFORMATION**

#### **Accreditation Statement**

---

The University of Pittsburgh School of Medicine is accredited by the Accreditation Council for Continuing Medical Education to provide continuing medical education for physicians.

The University of Pittsburgh School of Medicine designates this live activity for a maximum of 1.0 AMA PRA Category 1 Credits<sup>™</sup>.

Physicians should claim only the credit commensurate with the extent of their participation in the activity.

Other health care professionals are awarded .10 continuing education units (CEU's) which are equal to 1.0 contact hour.

#### **To Access Evaluation and Obtain Credit**

---

To receive credit, you will be required to access your account at <http://cce.upmc.com> and complete the course evaluation and/or claim credit. Evaluations and credit are **ONLY AVAILABLE** through the <https://cce.upmc.com/> site.

If you are a new user, click Register to create a new account. The activity has been added to your Pending Activities and accessible immediately following the activity.

Certificates will be available to download and stored for future reference in your Completed Activities.